

Infant Security RTLS: How It Works



01 Admission



Mother and Infant Tagging

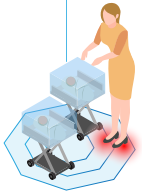
Upon admission to the maternity ward, the mother receives Litum's wearable Compact tag. After birth, the infant is provided with the wearable Little tag



Infant Pairing

The baby's tag is paired with the mother's tag using Litum's software to prevent mismatches and ensure that the correct mother is matched with her infant

02 Security



Unauthorized Access Detection

If an unauthorized person enters the secure area, the alarm system activates, sending alerts to guardians and security personnel



Unauthorized Removal Detection

The alarm system also activates if an unauthorized nurse attempts to take the infant out of the secure area



Tamper Protection

The tags are tamper-protected, triggering an alarm if any tag is removed or tampered with

Transfers

03

Temporary Pairing for Transfers

When transferring an infant to another department, the infant is temporarily paired with an authorized nurse who also wears a tag. This pairing allows the infant and the nurse to exit the maternity ward and move to another department without triggering unauthorized removal alerts



Time-Limited Transfers

The alarm system will trigger if the infant does not return to the maternity ward within a predetermined period



Discharging

04

Tag Removal by Authorized Nurse

Only an authorized nurse can remove the tag from the infant before discharge. The nurse first verifies the identity of the infant and then unpairs the tags of the infant and the mother



System Update Upon Discharge

The discharge process is completed on Litum's software, marking both the mother and infant as discharged and clearing their tag information



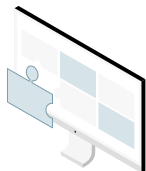
Contact us for more information.



www.litum.com

info@litum.com

Infant Security RTLS: Additional Features



LenelS2 OnGuard Certification

The solution is fully compatible with LenelS2 OnGuard, offering seamless integration for enhanced security operations



Advanced Capabilities

Unlock the power beyond alerts with historical data and patterns to proactively prevent future incidents



System Customization

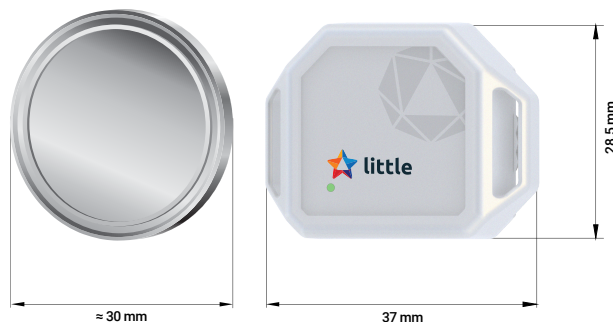
Customize business rules and alerts to align with specific facility needs

Meet the Little Tag



The "Little Tag" is a lightweight, hypoallergenic wearable device, designed specifically for newborns.

About the size of a half dollar coin, it integrates seamlessly with Litum's RTLS platform, using Ultra-Wideband and Bluetooth Low Energy (BLE) technologies to provide precise location tracking and robust security features.



* For exact reference, the tag is depicted at its real-life dimensions when viewed on A4. Print this paper on A4 to see the size of Little Tag.



Tamper-Proof



Lightweight



Hypoallergenic



Waterproof



Hybrid Technology



Reusable

Contact us for more information.



www.litum.com

info@litum.com